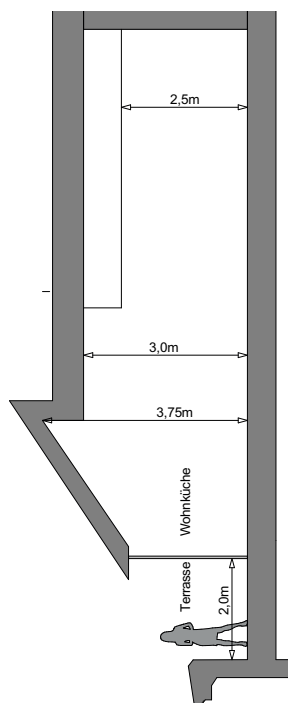
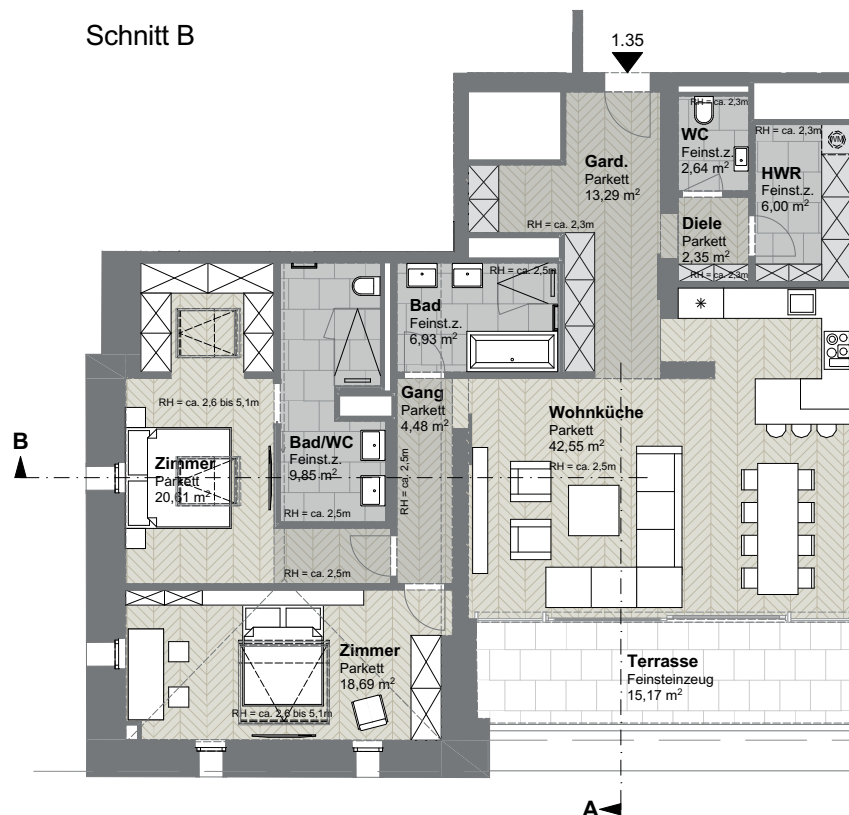


Schnitt B



Schnitt A



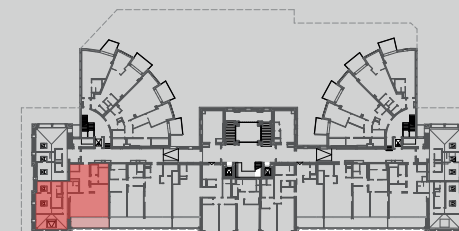
W Top 1.35, Wohnfläche

| | |
|--------------|------------------|
| Bad | 6,93 |
| Bad/WC | 9,85 |
| Diele | 2,35 |
| Gang | 4,48 |
| Gard. | 13,29 |
| HWR | 6,00 |
| WC | 2,64 |
| Wohnküche | 42,55 |
| Zimmer | 18,69 |
| Zimmer | 20,61 |
| Total | 127,39 m² |

W Top 1.35, Balkon/Terrasse

| | |
|--------------|-----------------|
| Terrasse | 15,17 |
| Total | 15,17 m² |

Raumhöhe 206 bis 510 cm



Obere Donaustraße



DG1

Top 1.35

0

3m

M=1:150